

QI Intufoam Linear Gap Seal

INSTALLATION INSTRUCTIONS

This installation guide is intended for general information only and all details should be checked against relevant supporting test evidence and certification.







PERFORMANCE TABLE

For full details and performance information contact the Quelfire Technical Team. A summary of results is as follows:

Product Code:	Suitable for Gaps:	Range:	Width of the seal:	Floor or Wall:	Integrity:	Insulation:
QI25/30	10 to 25mm	15mm	30mm	Floor	120 minutes	120 minutes
QI50/30	25 to 50mm	25mm	30mm	Floor	60 minutes	60 minutes
QI50/45	25 to 50mm	25mm	45mm	Floor	90 minutes	60 minutes
QI75/45	40 to 75mm	35mm	45mm	Floor	60 minutes	30 minutes
QI25/30	10 to 25mm	15mm	30mm	Wall	90 minutes	60 minutes
QI50/30	25 to 50mm	25mm	30mm	Wall	60 minutes	25 minutes
QI50/45	25 to 50mm	25mm	45mm	Wall	90 minutes	30 minutes
QI75/45	40 to 75mm	35mm	45mm	Wall	60 minutes	30 minutes

INSTALLATION STEPS:

- 1.** Ensure the correct product has been selected for the application – refer to the supporting documentation taking into consideration the following main points:
-  The orientation – horizontal or vertical
 -  The wall/floor construction
 -  The gap size
 -  The required fire rating



QI Intufoam Linear Gap Seal INSTALLATION INSTRUCTIONS

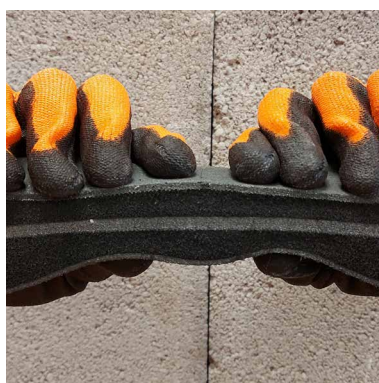
2. Check the gap size is within the scope of the product suitability



3. Ensure the gap is free of any dust and contaminants and relatively smooth

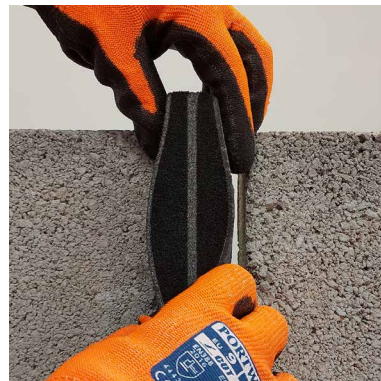
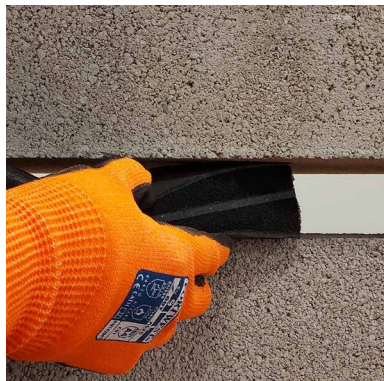


4. Compress the Intufoam by hand

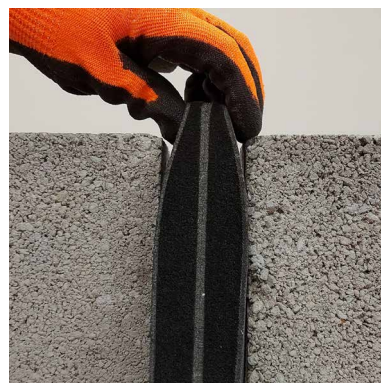


QI Intufoam Linear Gap Seal INSTALLATION INSTRUCTIONS

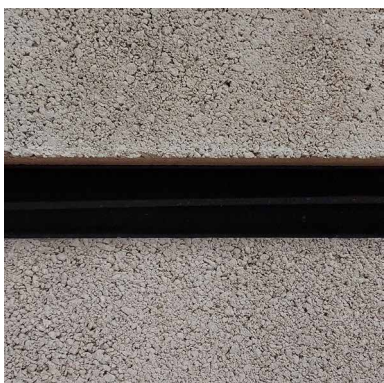
- 5.** Keeping the Intufoam under compression, insert into the gap starting from one end and release



- 6.** Continue along the length compressing and inserting



- 7.** Ensure the flat (grey) intumescent faces are against the surfaces - not the compressible foam



QI Intufoam Linear Gap Seal INSTALLATION INSTRUCTIONS

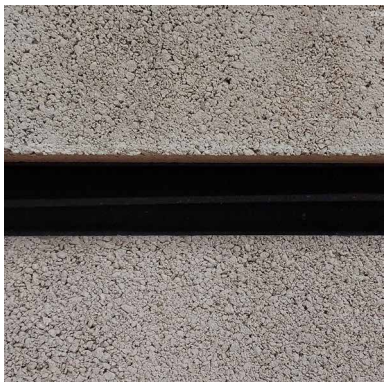
- 8.** Ensure the Intufoam is set back 25mm from the edge of the construction



- 9.** Repeat with next length ensuring the ends are butted up tight to each other

- 10.** Where required the Quelfire Intufoam can be cut to length with a sharp knife

- 11.** Ensure the seal is complete, positioned correctly and all sections butted tight. (No extra work or products such as intumescent sealant are required from a fire performance perspective the Intufoam is a standalone, dry fit, linear gap seal



Technical Support & Guidance:

Should you require any further information regarding this product, please do not hesitate to contact the technical department at Quelfire Ltd.

Tel: **0161 928 7308**. Email: technical@quelfire.co.uk

Please be aware that this document is intended for general information only and all details should be checked against all relevant supporting test evidence, certification and installation guidelines. Use of alternative components or deviations from the instructions in any way is likely to mean that the installation will not comply with the assessed rating.

Quelfire Ltd does not accept responsibility for the consequences of using Quelfire products in applications or for purposes not authorised by Quelfire Ltd. Expert advice should be sought where such applications are contemplated.

The policy of Quelfire Ltd is one of constant improvement. Installers should therefore ensure they are working from the latest published drawings and instructions. Whilst Quelfire will endeavour to keep its publications up to date, the accuracy of the information contained within this drawing may be affected by pertinent changes in the law or regulatory requirements and alterations or amendments to the specification of Quelfire products.

All information contained in this document is given in good faith and is provided for guidance only. Any drawings provided are for illustrative purposes only. As Quelfire Ltd has no control over the methods or competence of installation and of prevailing site conditions, no warranties, expressed or implied, is intended to be given as to the actual performance of the product mentioned or referred to herein and no liability whatsoever will be accepted for any loss, damage or injury arising from the use of the information given.